

# CONFIGURABLE UI COMPONENTS FOR 3DSPACE AND 3DDASHBOARD



## Accelerate 3DDASHBOARD User Adoption & Improve Productivity Without Adding Customizations

Do you ever find yourself wondering if 3DDASHBOARD applications could better support your unique business requirements and processes?

TECHNIA Value Components (TVC) allow you to leverage a rich set of configurable UI components for 3DSPACE, 3DDASHBOARD and standalone applications to configure user views directly in the UI. Equip your users with an intuitive, speedy, and click-efficient experience that is adapted to your processes without carrying the added cost and weight of custom code. For a quick, low risk implementation, our 'ready to use' UI configurations (Launchpads) are built on best practices to optimise many standard processes in 3DSPACE and 3DDASHBOARD.

## HOW CAN VALUE COMPONENTS SOLVE YOUR BUSINESS CHALLENGES?



### Improve Productivity

User Interface's optimized to support your unique and most commonly used processes enable users to spend more time adding value. No time is wasted clicking around trying to locate the right information within the platform.



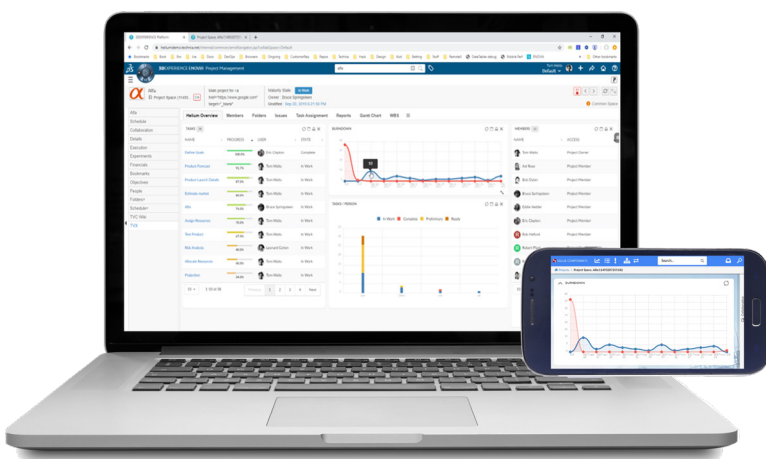
### Accelerate User Adoption

Equipping users with an intuitive, speedy, and click-efficient experience that is adapted to your processes, is a good way to increase business adoption rates and ensure the platform is used to its full potential.



### Minimise Cost of Ownership

Rapid deployment using version-independent configurations rather than version-specific custom code allows you to meet business demand OOTB, enabling painless upgrades and minimising lifetime cost.



**Did you know that a 5 minute time saving in a 10,000 user system adds up to total equivalent of more than 100 employees?**



# Value Components

## KEY CAPABILITIES OF TECHNIA VALUE COMPONENTS

### In-App Designer: Define Your Own Views

- Enable users to define their own views and widgets directly in the application without the need for developers.
- No costly and time consuming customizations.
- Leverage visualization in configurable dashboards for smart decision making.
- Enhance Search - Configure search entry forms and result tables or your own starting page and reduce the need for search.
- Optimised Use Cases - Create streamlined applications or tailor-made 3DX viewports for specific use cases. UI's optimized to perfectly match your most commonly used processes.

### Configurable Workflows & Responsive UI's

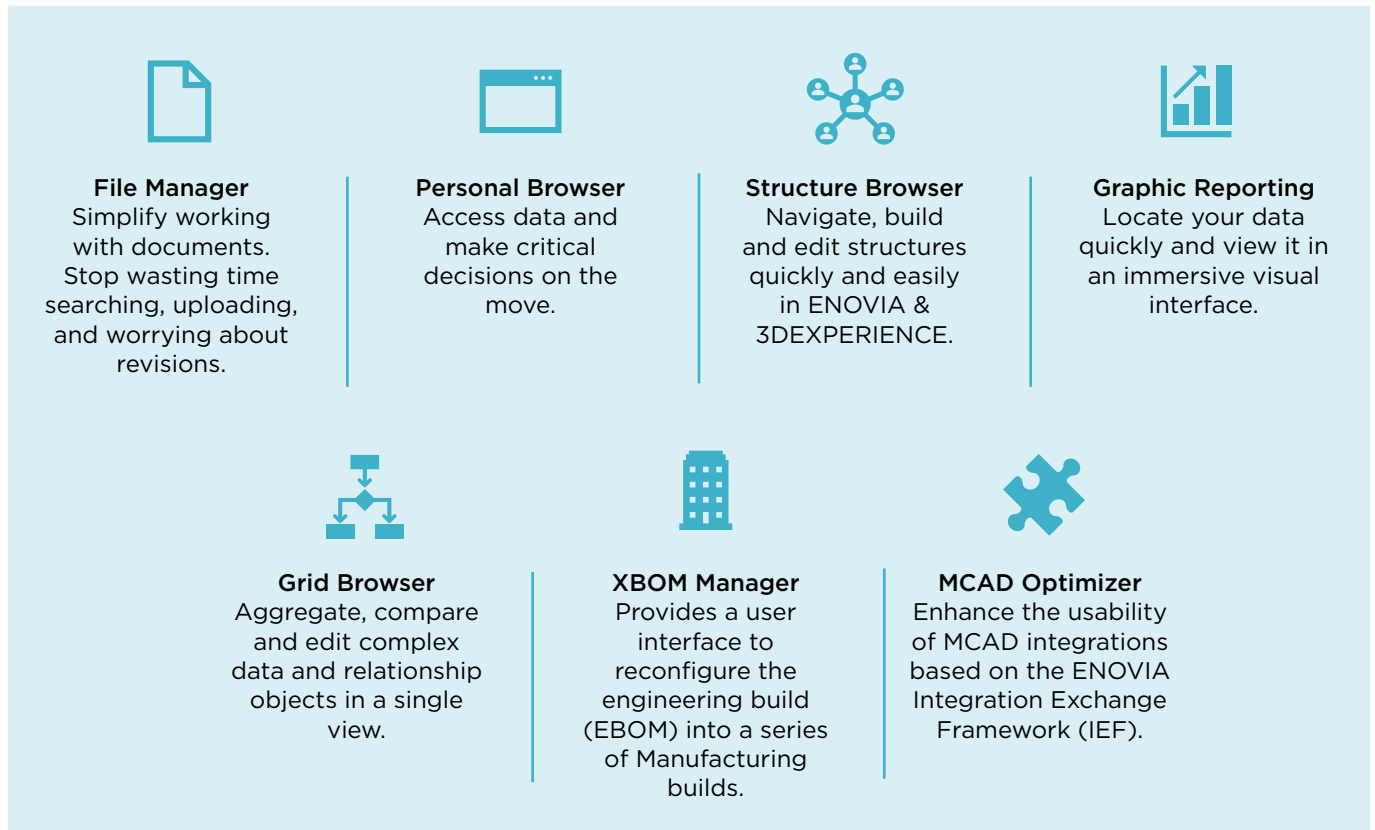
- UserGuidance - Make complex processes easy using configurable workflows with graphical overviews and instruction checklists.
- Increase Availability - Responsive UI's enable flexible working across different devices and access to offline data where networks are unreliable.
- Inline Collaboration - Increase traceability of product related discussions that that usually end up in external email threads or chat dialogs.
- Manage Files - One click edit and check in. Take control over all checked out files with tracked location and quick actions. Drag & drop. File property transfer.

### Rapid Deployment & Low Customization Footprint

- Consolidated data retrieval and a low network footprint ensures high overall system performance. Optimizing your User Interfaces for high performance reduces waiting time and empowers users to be more productive.
- Best Practice Plug and Play Launch Pads Apps optimize many standard processes in 3DSPACE & 3DDASHBOARD without the need to build your own configurations - for a quick and low risk implementation.
- Simplify Upgrades by configuring version-independent products rather than writing version-specific custom code.

## VALUE COMPONENTS

Present 3DEXPERIENCE data the way you want with these configurable, process-independent modules:



## #1 Knowledge Leaders in PLM

At TECHNIA, we pave the way for your innovation, creativity, and profitability. We combine industry-leading Product Lifecycle Management tools with specialist knowledge, so you can enjoy the journey from product concept to implementation.

Our experience makes it possible to keep things simple, personal and accessible so that together, we transform your vision into value. With over 30 years' experience, more than 6000 customers worldwide and world-class knowledge in PLM & Intelligent Engineering, we work together as true partner and extension of your team to create an exceptional PLM experience.

Our team of more than 680 people work from 32 locations around the world, across vertical industries, delivering a premium service with a global infrastructure and a local presence. We adopt the latest technology and agile methodologies so, even as technology changes, our relationships last a lifetime.

**Discover more at [www.technia.com/software/value-components](http://www.technia.com/software/value-components)**

Austria • Finland • France • Germany • India • Japan • Norway • Netherlands • Poland • Slovakia • Sweden • USA • UK